



THE GRAND  
BRIGHTON

# CONFERENCE & EVENTS





# Iconic Events on Brighton's Seafront

For more than 160 years, The Grand Brighton has been one of the UK's most recognisable seaside landmarks. Now, following a £17 million transformation, the hotel has been elevated for the needs of today's event organisers, offering flexible spaces, exceptional service and a convenient central Brighton location with excellent transport links.

Whether you're hosting a conference, corporate celebration or private event, our seven flexible meeting and events spaces can facilitate every occasion. With the capacity to host up to 900 delegates, combined with our prime seafront location, we offer an unrivalled setting for your next event.

# A Destination with History

Opened in 1864 as the original “Palace by the Sea,” The Grand has welcomed royalty, world leaders, renowned performers and thousands of memorable events throughout its long history.

Our recent refurbishment honours this heritage while elevating every detail, from refreshed bedrooms and redesigned public spaces to new dining experiences and the addition of our L.RAPHAEL Beauty Spa & Wellness.



# Versatile Rooms for Every Occasion

With seven event spaces accommodating everything from small strategy sessions to 900-delegate conferences, The Grand offers flexibility for gatherings of every scale. Each room benefits from lighting and a layout designed to support seamless hosting.

From the impressive Empress Suite to our elegant private dining spaces, each area provides a setting with character, comfort and a touch of coastal charm.

## Empress Suites

### Up to 900 Delegates

- The biggest sea-facing conference suite in the UK – perfect space for large-scale events.
- Accommodates 900 theatre style or 600 for private banqueting
- Audio visual routing for sound and light with well-appointed suspension points for creative and practical conference sets
- Splits into four separate rooms, offering flexibility for your event
- Private entrance, foyer, crush hall, private bathrooms, cloakroom and street loading



# Versatile Rooms for Every Occasion

## Regent Room

Up to 30 boardroom or 40 cabaret

- The hotel's original library which exudes a traditional charm
- Beautiful wood panelling and a fireplace make it the perfect room for private dining as well as meetings and small conferences
- Breakout space
- Luxury private dining menus created by our fabulous Grand chefs are available in this room
- Accommodates 30 for boardroom, 40 for cabaret and 80 for theatre style setup



# Versatile Rooms for Every Occasion

## Consort

Up to 30 boardroom or 40 cabaret

- Designed in our signature contemporary-meets-classic style
- This room is suitable for smaller meetings, presentations, private dining or board meetings
- Luxury private dining menus created by our fabulous Grand chefs are available in this room
- Accommodates 30 for boardroom, 40 for cabaret and 80 for theatre style setup



# Versatile Rooms for Every Occasion

## George II

### Up to 8 Delegates

- A unique space with luxurious decorative touches, quality British furnishings, and beautiful light fixtures
- A wonderful room for intimate private dining, executive meetings and to use as a syndicate space
- Features click share technology and a 55 inch HD display television
- Accommodates 8 in a boardroom set-up



## George III

### Up to 12 Delegates

- A vibrant space with luxurious decorative touches, quality British furnishings, and a bespoke Brighton mural wall
- A wonderful room for intimate private dining, executive meetings and to use as a syndicate space
- Features click share technology and a 55 inch HD display television
- Accommodates 12 in a boardroom set-up



# Versatile Rooms for Every Occasion

## Albert & Albert II

Up to 200 Delegates

- The hotel's original Ballroom which has been recently refurbished to showcase its historic features and high ceilings
- This room can be joined with the Albert II to create a stunning sea-facing suite
- 80 – 100 for party with private bar
- Over 250 for conference lunch



# Versatile Rooms for Every Occasion

## Cyan Restaurant

Up to 120 delegates for informal dining

- Restaurant in the hotel that offers an impressive seafront setting
- Cyan restaurant suitable for private dinner and exclusive hires
- Perfect for smaller numbers for informal dining experience and corporate entertaining
- From spectacular fresh seafood to classic grill favourites, our menu is designed for laid-back luxury dining with seasonal favourites



# Meet the Newly Transformed Albert Room

Recently refurbished as part of The Grand Brighton's £17 million investment project, the Albert Room offers a sophisticated and adaptable setting for meetings and events. Beautifully designed by Garuda Design Studio, the creative force behind our reimagined bedrooms and brand-new L.RAPHAEL Beauty Spa & Wellness, the space combines elegant furnishings with thoughtful functionality. A built-in food service station allows for seamless catering, while a movable dividing wall provides flexibility to host in a more intimate setting or open the room into a generous, sea-facing suite.





# Dedicated Support from Start to Finish

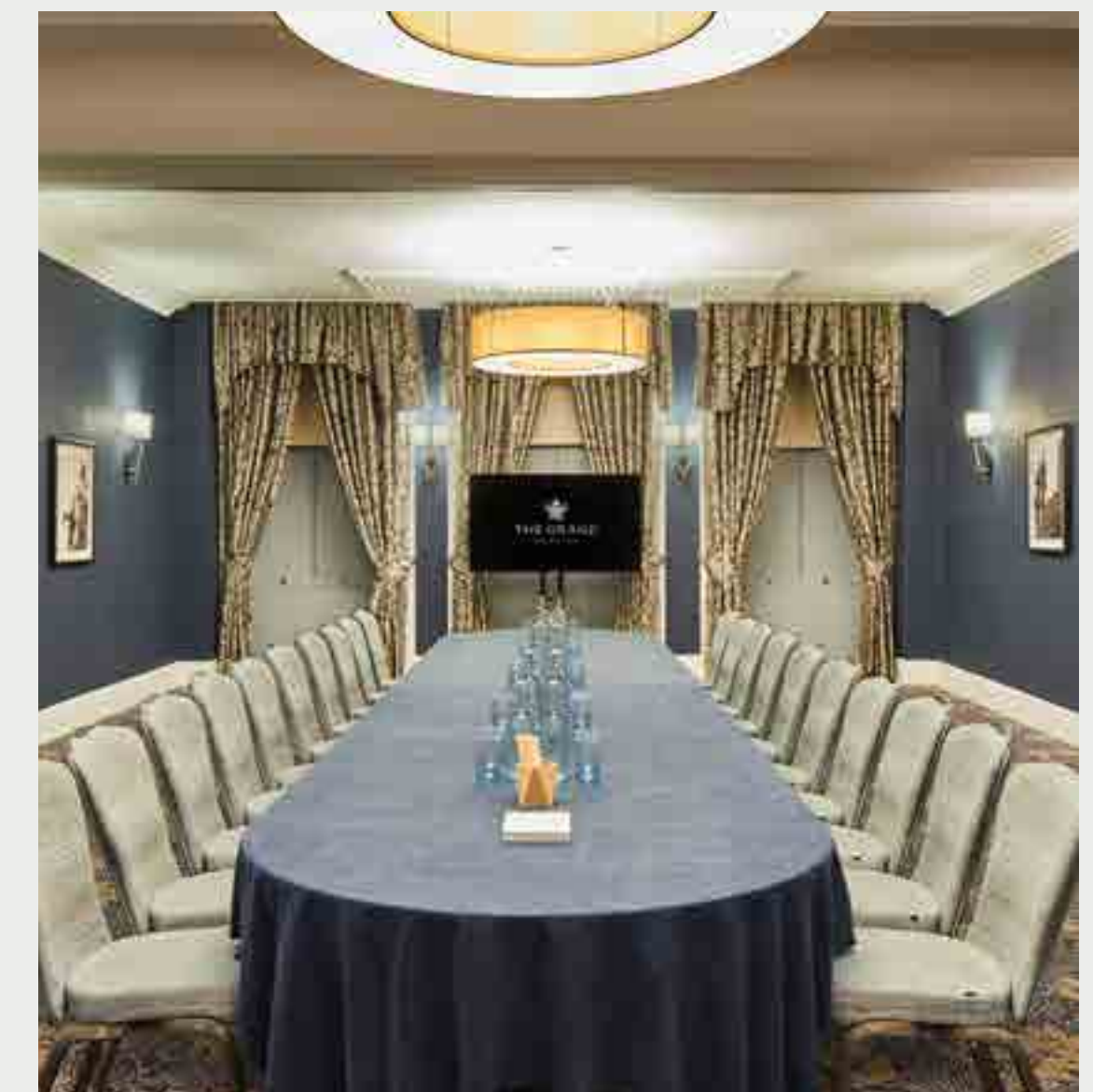
At The Grand, excellent service is at the heart of every event. Your dedicated Events Manager will support you throughout the planning process, coordinating AV, menus, guest requirements and personalised touches to ensure everything runs effortlessly on the day.

We pride ourselves on delivering experiences that feel considered, polished and genuinely welcoming.

## Day Delegate Package

Our Day Delegate Package includes:

- Main meeting room hire
- LCD projector, screen, flipchart and markers
- Click-share technology, Freeview and HD television (in George II and George III meeting rooms)
- Tea and coffee to include mid-morning and afternoon snack
- Two-course lunch or working buffet
- Complimentary Wi-Fi in all public areas and meeting rooms
- Sparkling and still mineral water
- Pads and pens
- A dedicated Events Manager to ensure the smooth running of your event



# The Grand Spa

The L.RAPHAEL Beauty Spa & Wellness is a luxury sanctuary offering a thermal suite, state-of-the-art gym and a range of advanced beauty and wellness treatments.

Designed to promote relaxation and wellbeing, the spa delivers personalised experiences led by expert therapists, creating the perfect opportunity for guests to unwind.

## Includes

- Gym with Technogym equipment
- Sauna
- Steam Room
- Hydrotherapy Pool
- Jacuzzi
- 6 treatment rooms
- Experience showers



# The Grand Brighton Hotel

205 Bedrooms.  
Newly refurbished  
as of March 2025.

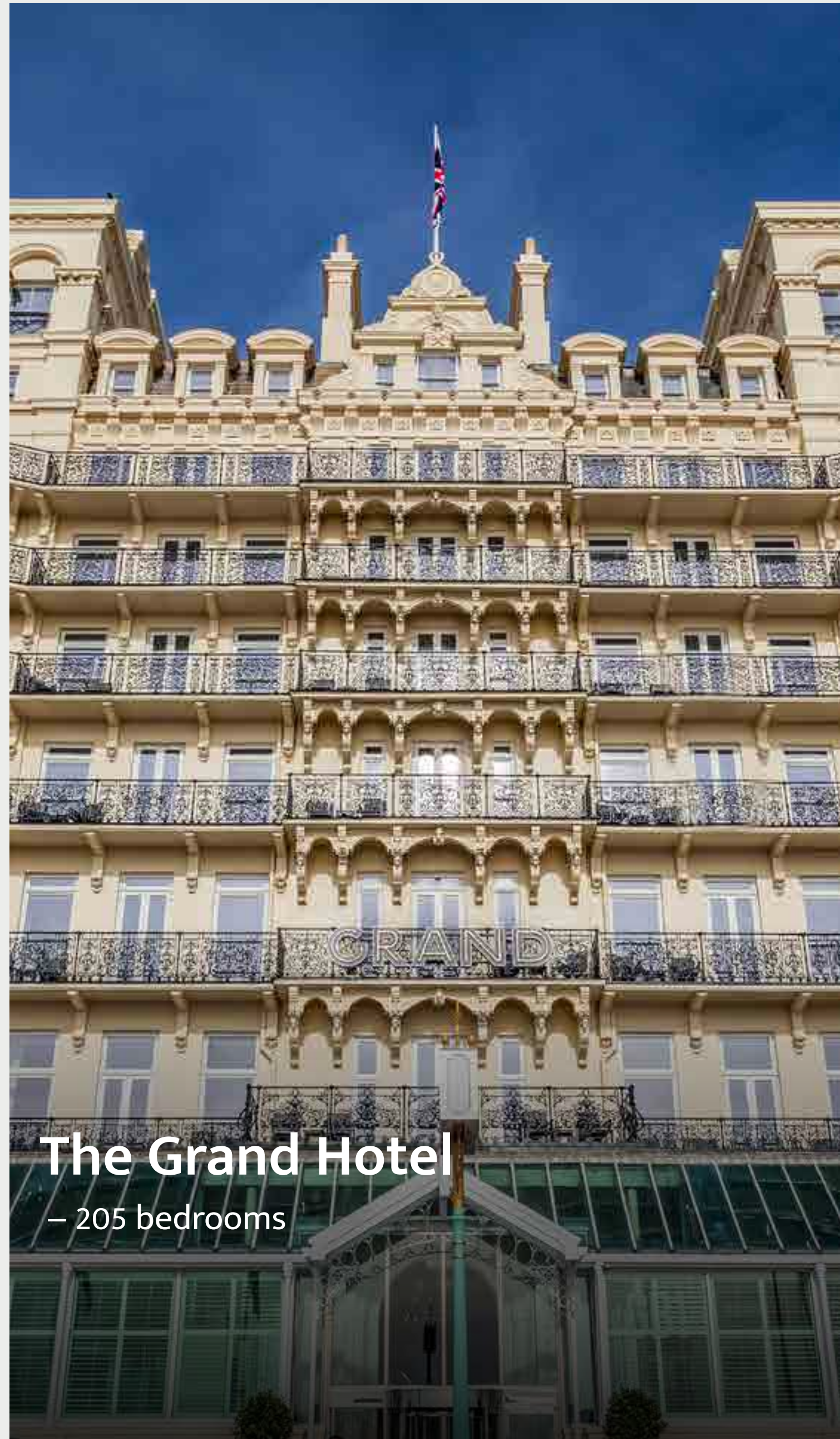
- Classic Double
- Superior King
- Superior King Family
- Superior King Sea View
- Executive King Sea View
- Junior Suite
- Junior Suite Family





# Increased Accommodation Options

With three hotels in Brighton, we now have increased capacity of 645 bedrooms for Conferences & Events.



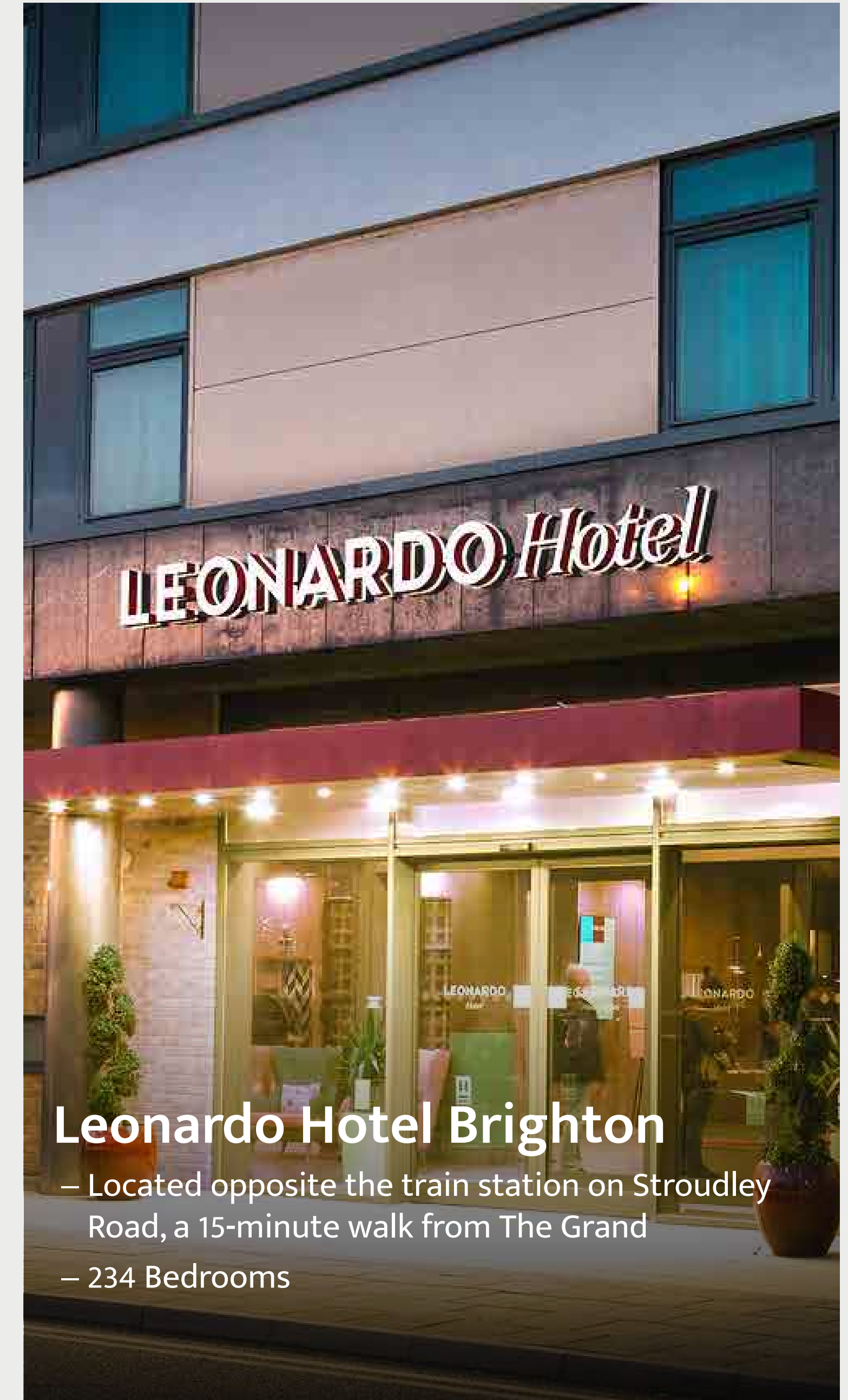
**The Grand Hotel**

– 205 bedrooms



**Leonardo Royal Hotel  
Brighton Waterfront**

– Located on the Waterfront,  
a 7-minute walk from The Grand  
– 210 Bedrooms



**Leonardo Hotel Brighton**

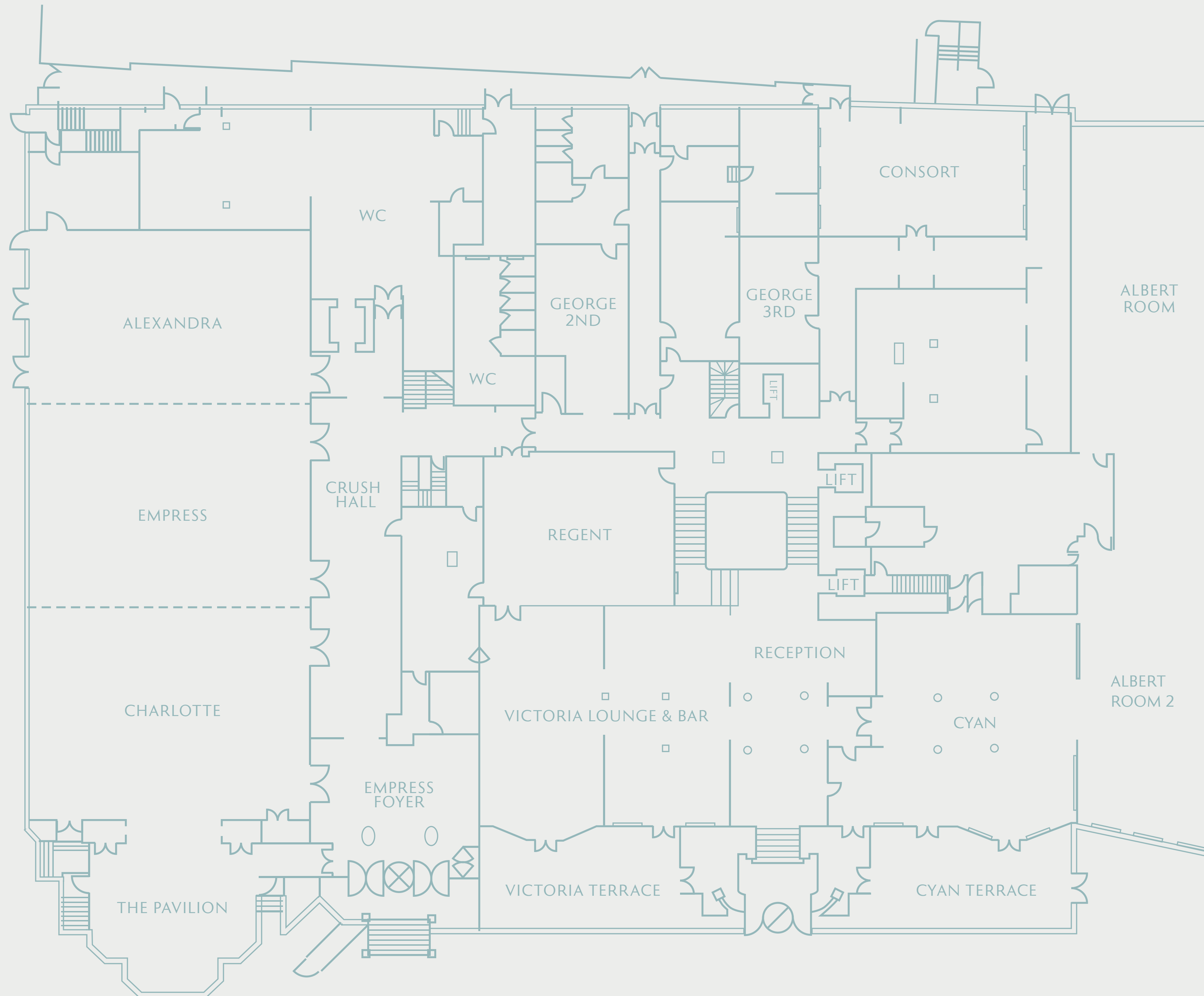
– Located opposite the train station on Stroudley  
Road, a 15-minute walk from The Grand  
– 234 Bedrooms

# Location

Our stunning seafront location is not only visually striking but also incredibly convenient. With direct train links to London and beyond, The Grand is just 35 minutes from Gatwick Airport and 55 minutes from London Victoria. Beyond our doors, guests can enjoy Brighton's array of off-site dinner venues and activities located right on the doorstep, ensuring a truly accessible and engaging stay for both local and international visitors.



# Floor Plans



# Capacities

	Theatre Front Projection	Theatre Back Projection	Classroom Front Projection	Classroom Back Projection	Boardroom	Cabaret Front Projection	Cabaret Back Projection	Banqueting	U-Shape	Informal	Rounds of 8	Dimensions W × L × H
Empress Suite	900	750	450	400	-	400	350	600	-	1100	360	15 × 34 × 5
The Pavilion	80	-	25	-	36	40	-	60	16	120	40	9 × 9 × 5
Charlotte Room	250	240	120	90	60	112	112	200	48	300	112	15 × 12 × 5
Empress Room	250	240	120	90	60	112	112	200	48	300	112	15 × 12 × 5
Alexandra Room	250	200	100	80	50	96	96	150	42	250	96	14 × 10 × 5
Charlotte and South Empress	350	300	180	180	-	160	160	250	-	500	160	15 × 14 × 5
Charlotte, North and South Empress	500	400	250	250	-	250	250	400	-	800	250	15 × 24 × 5
Alexandra and Empress	400	250	200	150	-	220	220	350	-	700	220	22 × 14 × 5
North Empress and Alexandra	350	250	200	120	-	180	180	300	-	500	200	18 × 14 × 5
North Empress Room	186	180	90	68	45	84	84	150	36	180	84	15 × 8 × 5
Cyan	-	-	-	-	-	-	-	80	-	120	-	17 × 14 × 5
Consort Room	80	40	40	30	30	40	40	60	26	100	40	12 × 8 × 3
Regent Room	80	40	40	30	30	40	40	60	26	100	40	11 × 9 × 3
Albert	-	-	-	-	-	-	-	80	-	100	-	23 × 8 × 7
Albert II	-	-	-	-	-	-	-	50	-	-	-	23 × 8 × 7
George II	-	-	-	-	8	-	-	-	-	-	-	5 × 4 × 3
George III	-	-	-	-	10	-	-	-	-	-	-	7 × 3 × 3

# LET'S CREATE SOMETHING GRAND

Bring your next meeting, conference or celebration to life at one of the South Coast's most iconic destinations. Our experienced team would be delighted to help you design an event that feels exceptional from start to finish.

[grand.conference@leonardohotels.com](mailto:grand.conference@leonardohotels.com)

01273 224300



THE GRAND

BRIGHTON